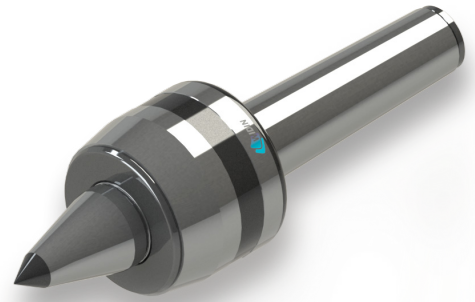
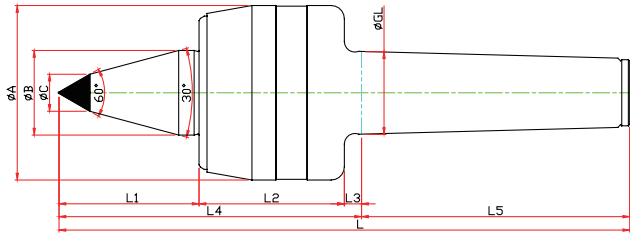


# NCPBC-TYPE

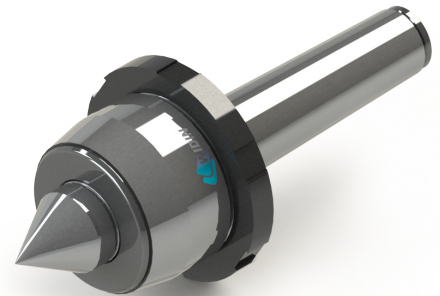
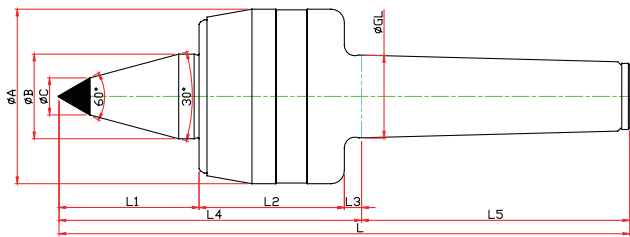
※ SHAFT 확장(바이트 간섭 최소화) SHAFT EXTENTION(Minimize the bite-interference)  
 ※ 초경타입 Carbide Type



Model	Order Number	Morse Taper	Dimension										Weight MAX.	R.P.M MAX.	Run Out
			GL	A	B	C	L1	L2	L3	L4	L5	L			
LC-3NCPBC	031103	NO.3	23,825	50	22	10	27	45	5	97	81	178	410	4800	0.003
LC-4NCPBC	031104	NO.4	31,267	66	32	14	37	55	6.5	114.5	101.5	216	710	3800	0.003
LC-5NCPBC	031105	NO.5	44,399	82	40	16	45	65	6.5	136.5	129.5	266	1000	3400	0.005
LC-6NCPBC	031106	NO.6	63,384	100	45	18	65	80	8	166	182	348	1400	3000	0.005

# NCPN-TYPE

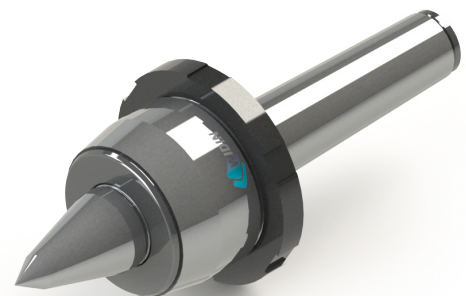
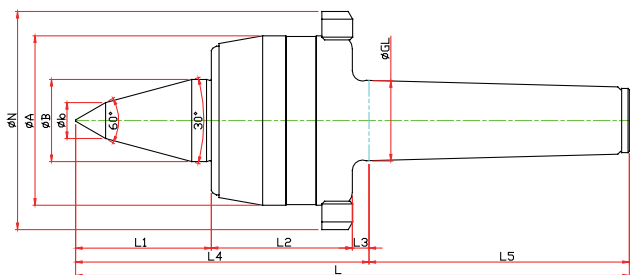
※ 너트타입 Nut Type



Model	Order Number	Morse Taper	Dimension										Weight MAX.	R.P.M MAX.	Run Out
			GL	A	B	L1	L2	L3	L4	L5	N	L			
LC-3NCPN	030013	NO.3	23,825	50	22	27	45	5	77	81	70	158	800	4800	0.003
LC-4NCPN	030014	NO.4	31,267	66	32	37	55	6.5	98.5	101.5	85	200	1300	3800	0.003
LC-5NCPN	030015	NO.5	44,399	82	40	45	65	6.5	116.5	129.5	105	246	1900	3400	0.005
LC-6NCPN	030016	NO.6	63,384	100	45	65	80	8	153	182	130	335	2500	3000	0.005

# NCPBN-TYPE

※ 너트, 초경타입 Nut, Carbide Type



Model	Order Number	Morse Taper	Dimension										Weight MAX.	R.P.M MAX.	Run Out	
			GL	A	B	b	L1	L2	L3	L4	L5	N				L
LC-3NCPBN	031013	NO.3	23,825	50	22	10	47	45	5	97	81	70	178	410	4800	0.003
LC-4NCPBN	031014	NO.4	31,267	66	32	14	53	55	6.5	114.5	101.5	85	216	710	3800	0.003
LC-5NCPBN	031015	NO.5	44,399	82	40	16	65	65	6.5	136.5	129.5	105	266	1000	3400	0.005
LC-6NCPBN	031016	NO.6	63,384	100	45	18	78	80	8	166	182	130	348	1400	3000	0.005